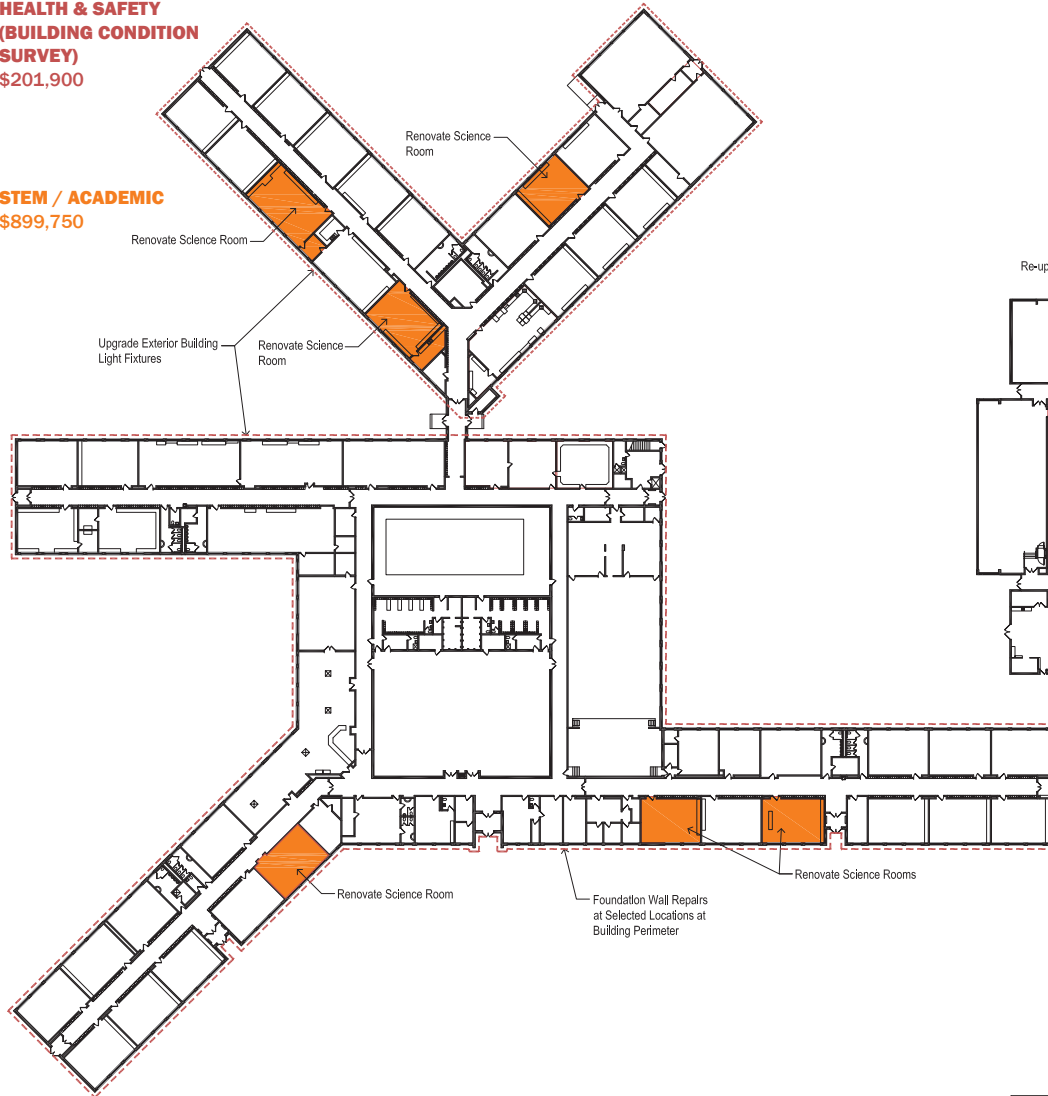


Middle School First Floor Plan

**HEALTH & SAFETY
(BUILDING CONDITION
SURVEY)**
\$201,900

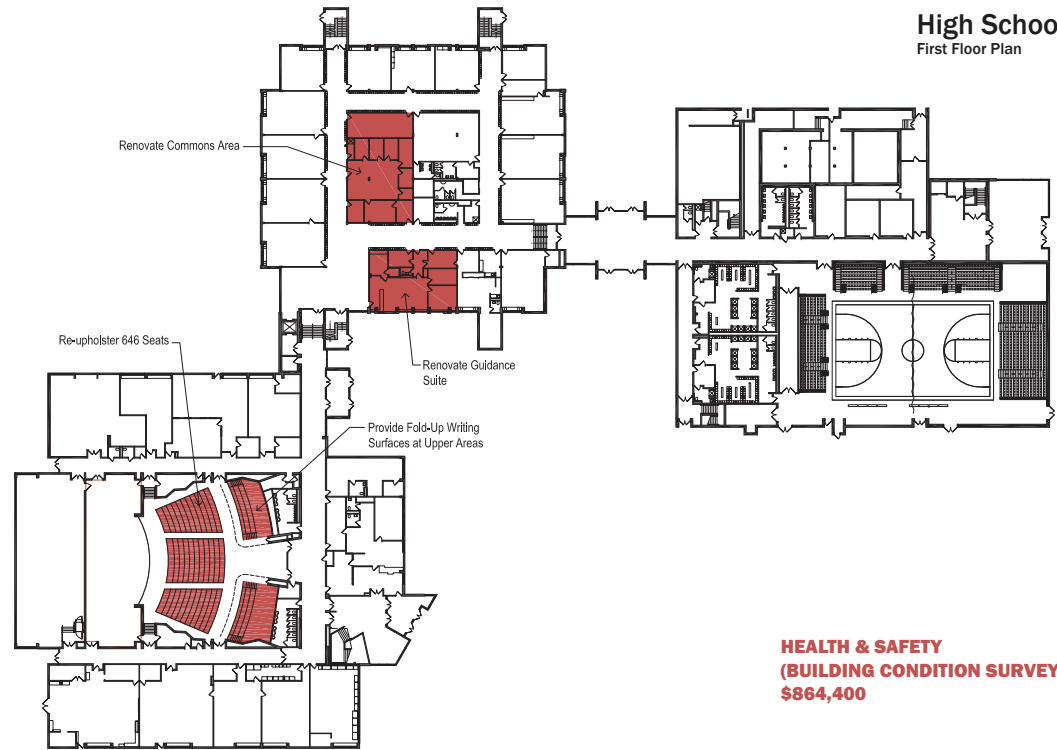
STEM / ACADEMIC
\$899,750



High School First Floor Plan

**HEALTH & SAFETY
(BUILDING CONDITION SURVEY)**
\$864,400

STEM / ACADEMIC
\$624,750



High School Third Floor Plan



Lewiston - Porter Central School District 2017 Capital Improvement Project